



111 Whitefield Road, Penwortham

Offers in Region of **£180,000**





111 Whitefield Road

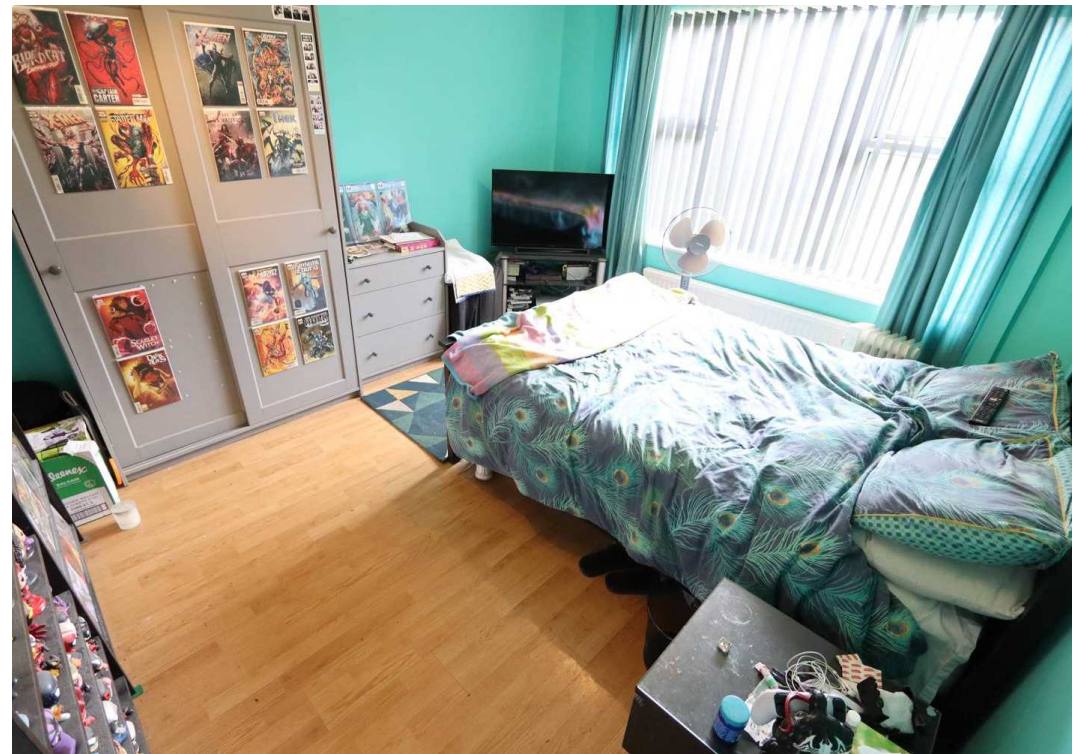
Penwortham, Preston

Fantastic 4-bed semi-detached bungalow in Penwortham needing modernisation. Spacious rooms, large lounge, kitchen diner. Great location near amenities and schools, ample outdoor space for potential landscaping. Ideal for families. NO CHAIN

Council Tax band: C

Tenure: Freehold

- Semi-detached Bungalow on Generous Plot
- Requires extensive modernisation
- Sought-after higher Penwortham location
- Nearby Ofsted outstanding schools- Perfect for Families
- 4 Bedrooms - 3 double Bedrooms
- Expansive outdoor area with privacy, PLENTY of Parking
- Close to local shops, cafes, restaurants, and other essential services
- Convenient Transport Links
- Fantastic Opportunity and sold with NO CHAIN
- EPC - TBC



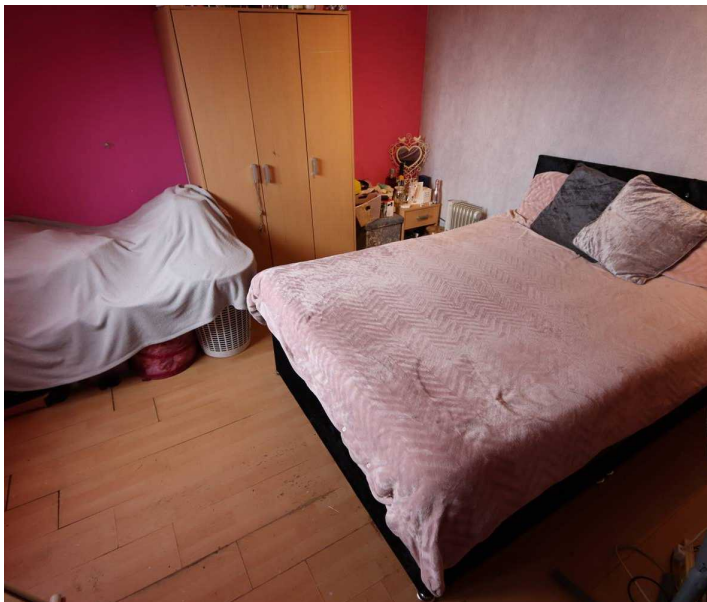


The property

Welcome to this charming 4-bedroom semi-detached bungalow, in need of desperate modernisation, yet with it nestled on a generous plot in the heart of Penwortham, makes this a fantastic opportunity. The property boasts three spacious double bedrooms and one single, making it ideal for growing families or those seeking extra space. The expansive lounge provides a perfect setting for relaxation, while the kitchen diner area would be perfect for family meals and entertaining guests. Outside, being well set back from the road, creates that privacy, whilst allowing for great outdoor space, with plenty of driveway parking and a not directly overlooked rear garden. With its prime location and abundant potential, this bungalow invites you to bring your vision to life and make it truly your own. Though it requires updating, the property presents a unique opportunity for you to add your personal touch and create a dream home.

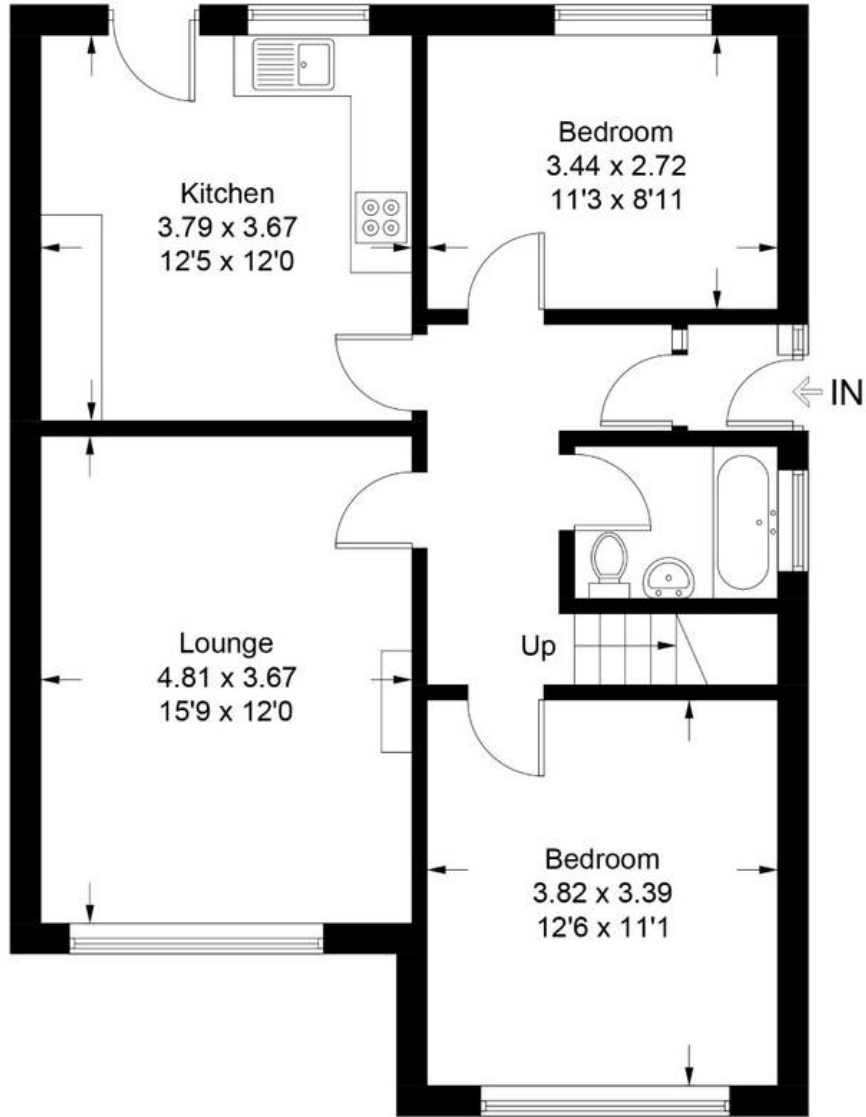
Book your viewing today

Don't miss the chance to view this promising property on Whitefield Road – a fantastic opportunity for anyone looking to invest in a wonderful family home with endless possibilities. Contact us today to arrange a viewing and start your journey towards making this house your home!

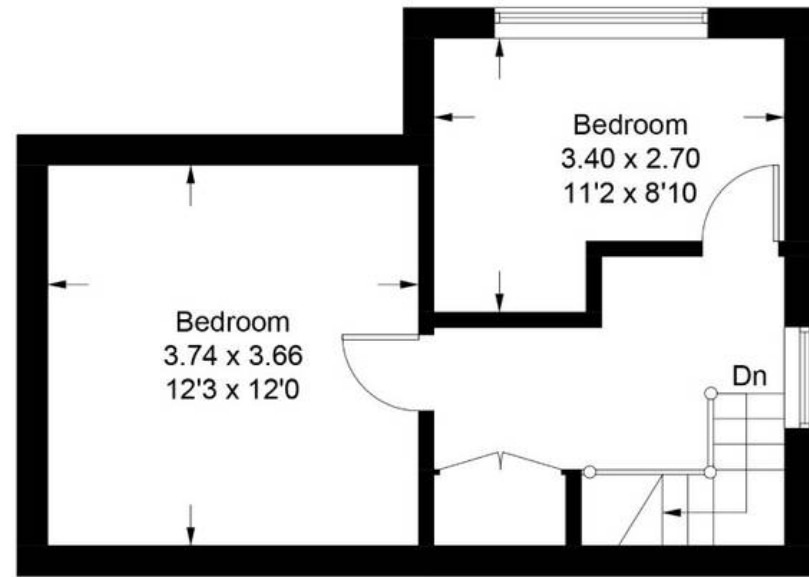


Whitefield Road

Approximate Gross Internal Area = 100.7 sq m / 1084 sq ft



Ground Floor



First Floor

You can include any text here. The text can be modified upon generating your brochure.

