



Flat D, New Quay Road, 20 New Quay Road, Lancaster
£130,000





Flat D, New Quay Road

20 New Quay Road, Lancaster

Modern one-bedroom apartment with enviable River Lune views in Redrow development near Lancaster City Centre. Open-plan living, 'Smeg' appliances, residents' parking, lush communal grounds. Ideal for professionals, couples, or investors seeking style and convenience.

Council Tax band: A

Tenure: Leasehold

- Modern one-bedroom apartment
- Located on New Quay Road, overlooking the River Lune
- Part of the popular Redrow development
- Convenient location near Lancaster City Centre and Lancaster Railway Station
- Bright and immaculate interior
- Open-plan lounge/diner/kitchen
- Spacious double bedroom
- Store/utility room
- Residents' parking and additional visitors' parking available
- EPC Band - B





The Location

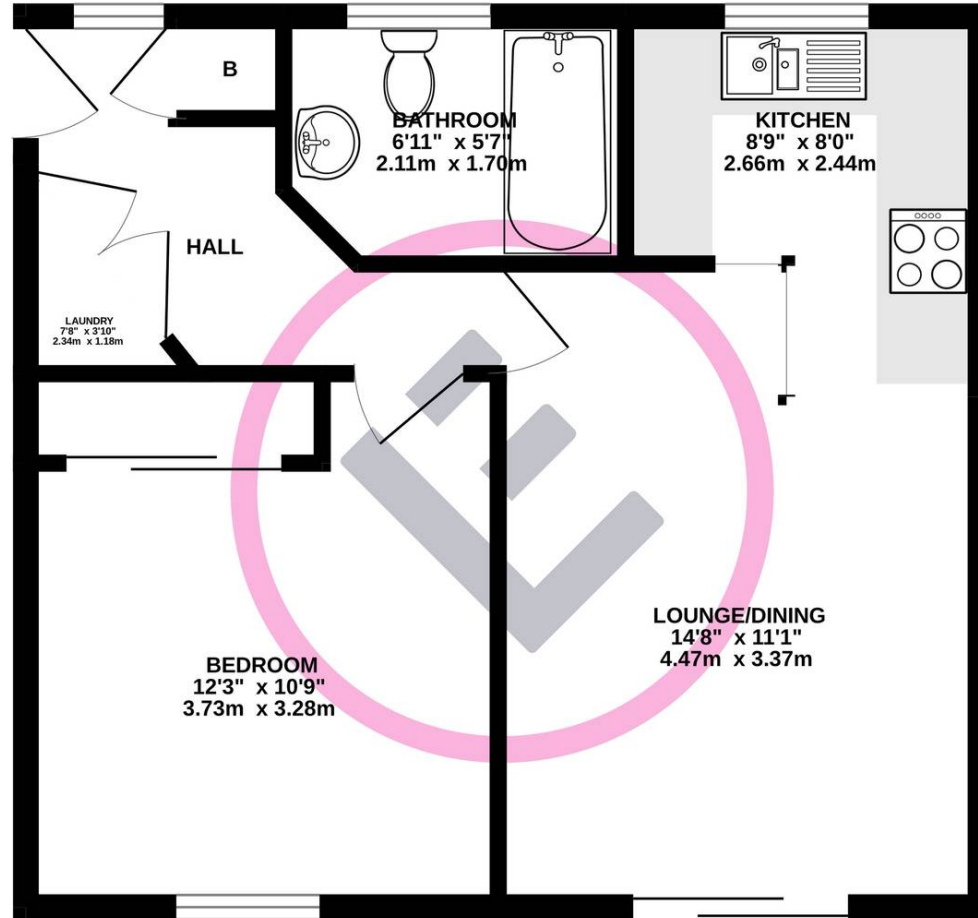
This modern one-bedroom apartment is located on New Quay Road in Lancaster, overlooking the scenic River Lune. The property is part of the popular Redrow development, offering a convenient location within easy travelling distance of Lancaster City Centre, Lancaster Railway Station, and walks in the local countryside. If Food and Drink is your thing, the Quayside offers exceptional pubs and restaurants.

The Apartment

A bright and immaculate apartment, this property features an open-plan lounge/diner/kitchen, a double bedroom, a bathroom, an entrance hallway, and a large store/utility room. Residents benefit from dedicated parking, with additional visitors' parking available for guests. The kitchen is well-equipped with an integral fridge freezer and 'Smeg' oven, grill, and hob. What more could you want?



1ST FLOOR APARTMENT



You can include any text here. The text can be modified upon generating your brochure.

